

Advanced robotics for modern, efficient farming

nsolidate Connect Conduct Concept Conceive Contribute Consult Contain Contact Conceptual Convincing Contractor Consolidate
nnect Conduct Concept Conceive Contribute Consult Contain Contact Conceptual Convincing Contractor Consolidate Connect Con
ncept Conceive Contribute Consult Contain Contact Conceptual Convincing Contractor Consolidate Connect Conduct Concept Con
ntribute Consult Contain Contact Conceptual Convincing Contractor Consolidate Connect Conduct Concept Conceive Contribute

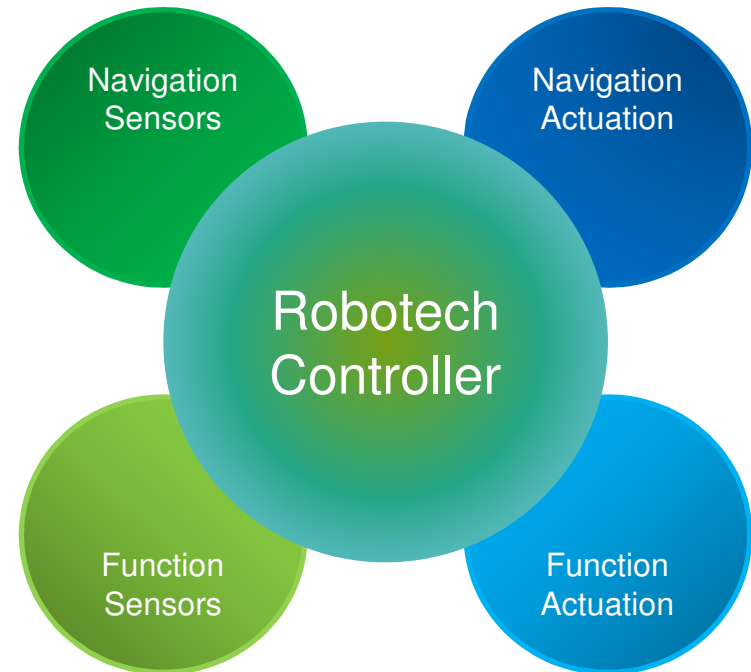


Robotech Controller 501

Powerful Embedded Vehicle Computer

Compleks Robotech Controllers

- The Robotech Controller is the core of any autonomous vehicle equipped with Compleks' Robotech technology.
- The Robotech controller has four main logical interfaces:
 - Navigation sensors
 - Navigation actuators
 - Function sensors
 - Function actuators
- The interfaces towards the navigation parts are generic, whereas the interfaces towards the functional parts are application specific.



Compleks Robotech Controller 501

Introduction

- The Compleks Robotech Controller 501 is a high-performance, ruggedized embedded vehicle computer platform e.g. for temperature-hardened outdoor robotics.
- The controller is equipped with a number of external interfaces making it possible to connect the controller to all the sensors and actuators used in your specific robotics or advanced automation application.
- All interfaces are supported by the Robotech Controller software package that includes ROS-based middleware and a Linux/Ubuntu operating system.



Compleks Robotech Controller 501

Main Features

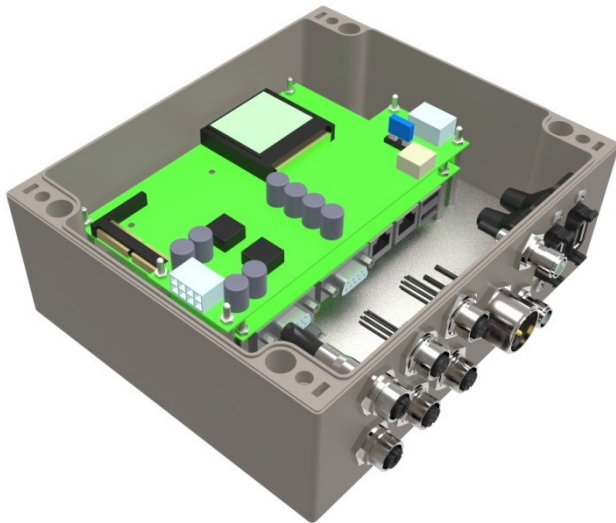
- On-board 3rd generation Intel Core I5 processor
- Flash-based hard-drive
- Linux/Ubuntu operating system
- Compact design, IP67 compliant, fully sealed mechanics
- Optional Can-bus interface for sensor connectivity
- GE and FE Ethernet and USB 2.0 ports
- GPS prepared
- WiFi and Bluetooth supported
- Serial ports
- Optional 3G connectivity
- Automotive 12 VDC supply (6-36 V range)
- 0 – 50 °C operational temperature range



Compleks Robotech Controller 501

Rugged hardware and high-quality connectors

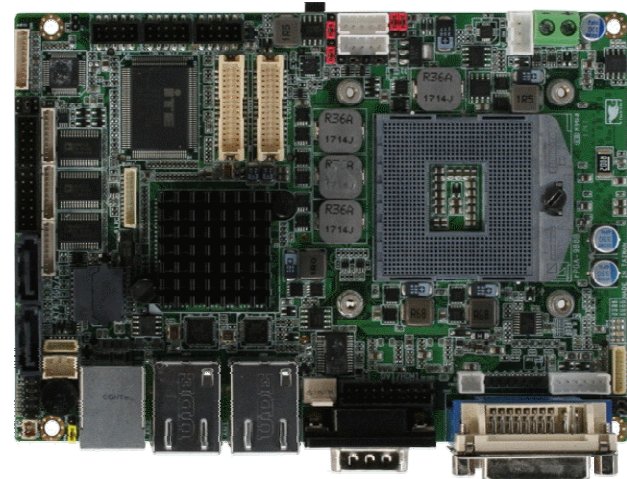
- All I/O connectors are mounted on one single side of the controller
- The processor on the main board is thermo-coupled directly to the aluminum box
- The overlay allows OEM branding



Compleks Robotech Controller 501

Main Processor Board

- The Compleks Robotech Controller 501 is equipped with a powerful Aaeon GENE-QM77 board that supports the 3rd Generation Intel® i7-,i5,-i3 2Core and 4Core CPU technology with long-term availability.
- Based on the Mobile 3rd generation Intel® chipset, the motherboard offers an ideal performance-per-watt ratio and the very latest interface technology
- Legacy interfaces are also supported, 6 x SATA (incl. 2 x SATA III) interfaces alongside the 4x USB 3.0 & 10x USB 2.0 interfaces.



This material is shared under strict NDA (Non-Disclosure Agreement)

The material contains confidential information from Conpleks Innovation in Denmark. By receiving this material, the recipient agrees that it (1) will cause its directors, officers, employees and representatives to use the information contained herein only to engage in high level discussions with Conpleks Innovation, and for no other purpose, (2) will not disclose this information to any other party, and (3) shall delete/return the material together with any copies thereof to Conpleks Innovation upon request.

Any estimates and projections contained herein involve significant elements of subjective judgment and analysis, which may or may not be correct. Conpleks Innovation does not make any representation or warranty, express or implied, as to the accuracy or completeness of the information contained in this material, and nothing contained herein is, or shall be relied upon as, a promise or representation, whether as to the past or the future.

This material does not purport to contain all of the information that may be required to evaluate a transaction and any recipient hereof should conduct its own independent analysis of Conpleks Innovation and the data contained or referred to herein. Conpleks Innovation does not commit to update or otherwise revise the material supplied.

About Conpleks Innovation

Conpleks Innovation is based in Struer, Denmark, and operates worldwide. Our customer base consists of both small domestic companies and large international corporations.

Depending on the nature of the task, we can involve an entire network of competent hardware, software and mechanical design professionals.

This way, we can assign appropriate resources, find the best solutions and create a successful product.

Contact us

You are always welcome to contact us and discuss how we can help you to develop your idea – partly or fully – depending on your needs.



Fælledvej 17 · 7600 Struer · Denmark · Email: contact@conpleks.com · www.conpleks.com